

Lisa Leftover

Small Group Reading

Before reading

Ask students what the front cover tells them about the story. Ask if they think Lisa Leftover is the character's real name. Why do they think she is leftover? Preview Reading vocabulary and discuss word meanings with students. Brainstorm words about friendships.

During reading

Summarizing As students finish reading each chapter, have a volunteer summarize the events in the story so far.

Ask students the following questions as you read each chapter together.

CHAPTER 1

- Why is Lisa so sad about Marina moving away? (literal)
- Have you ever lost your best friend? How did you feel? (personal response)

CHAPTER 2

- How does Lisa try to make friends? Does it work? (literal)

CHAPTER 3

- How does Lisa's mom try to help Lisa? Does it work? Why? (literal/inferential)

CHAPTER 4

- Have you ever had to go to a new school? How easy or hard was it to make friends? (personal response)

CHAPTER 5

- Why do you think this chapter is called "Silence"? (inferential)

- Do you think Lisa behaves in a way that would help her make friends? What else could she do? (personal response)

CHAPTER 6

- What are some of the "silent sounds" the children hear? (literal)
- How do Pen and Lisa become friends? (literal)

CHAPTER 7

- How does Lisa show us that she has difficulty making friends? (inferential)

After reading

Students may complete BLMs 1 and 2 after you provide them with instructions for each activity.

Using graphic organizers Tell students to create a slogan for the T-shirt on BLM 1 that promotes being a good friend. Then have them create a character web of one of their friends. **(BLM 1)**

Grammar Explain that alliteration is the repetition of the beginning sound of a group of words. On BLM 2, have students use words from the text to create sentences with alliteration.

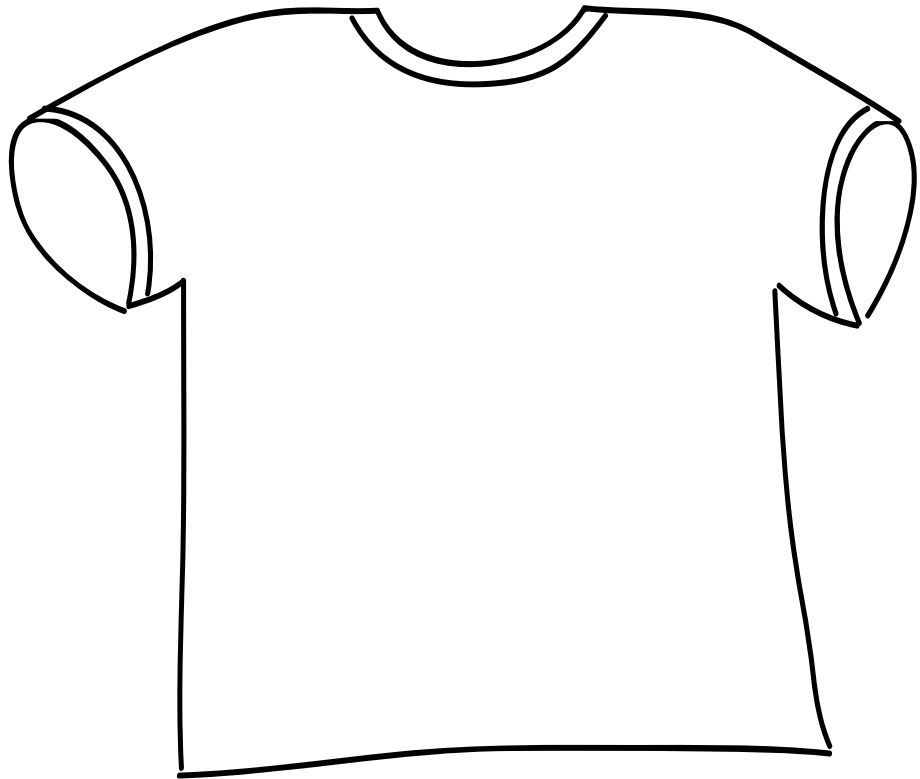
Grammar Remind students that proper nouns are names for particular people, places, and things. Have them complete the activities on proper nouns on BLM 2.

Spelling Tell students to use a dictionary to find the meanings of words from the story. **(BLM 2)**

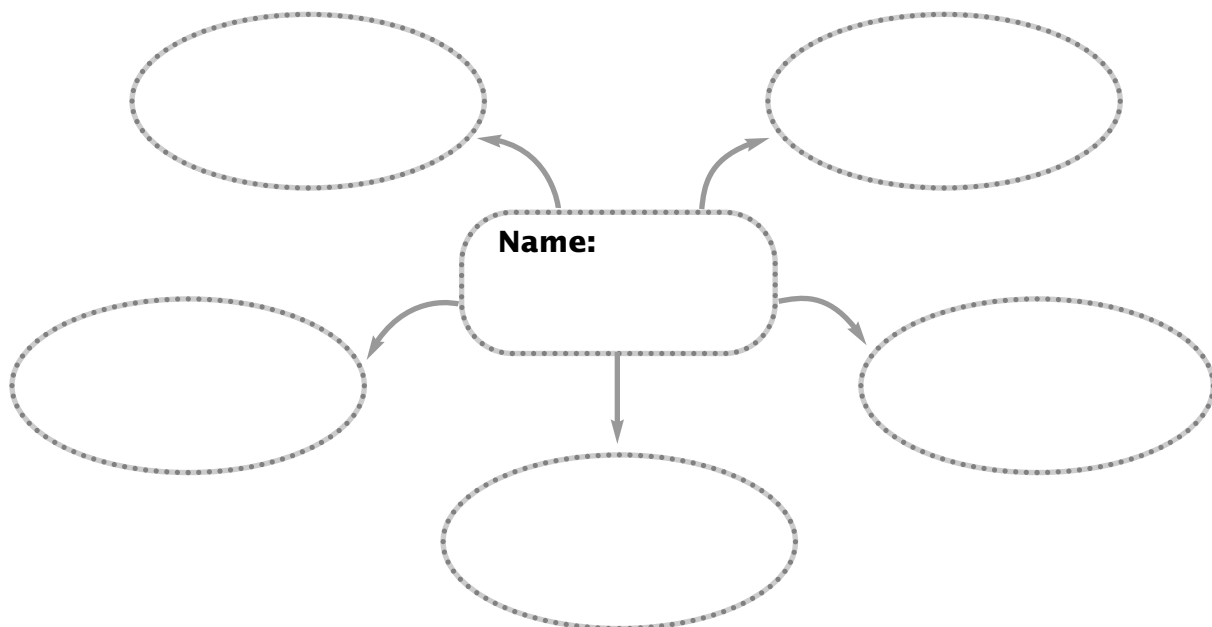
Fluency Model reading with expression Chapter 7 for students. Then have volunteers reread aloud a part of the chapter. Remind students to pay attention to punctuation.

➔ T-shirt slogan

Create a slogan for a T-shirt that promotes being a good friend.

**➔ Character web**

Think about someone you consider a good friend. What characteristics do you like about this person? Think of five words or phrases to describe your friend.



➔ Alliteration

Alliteration is the repetition of the beginning sound of a group of words.

For example: *Peter picked a purple pickle from Pen's pink pants.*

Use these words with repeated sounds in sentences that show alliteration.

silent sounds _____

football fever _____

Lisa Leftover _____

➔ Proper nouns

Nouns are naming words. Proper nouns are names for particular people, places, and things. They start with a capital letter.

Write proper nouns to match the nouns.

Your friend	A country
Lisa's best friend	Your favorite day
Your teacher	The street you live on
Lisa's teacher	Your school
Lisa's new friend	One of Lisa's classmates

In the sentences in the box to the right, **circle** the nouns in red. Give the proper nouns capital letters.

- "Oh, but did you see it on monday? tom palliser thought someone was trying to steal . . ."
- On friday, ms. gleeson's class went on a field trip. It wasn't a bus-ride field trip, they were just walking to the park.

➔ Word meanings

Use your dictionary to find the meaning of these words from the text.

ruffled _____

lumbered _____

hovered _____

surged _____

